

Gearn Offshore Inc

4" x 450' x 15 ksi Winch System

General Specifications

Winch Size / Weight:

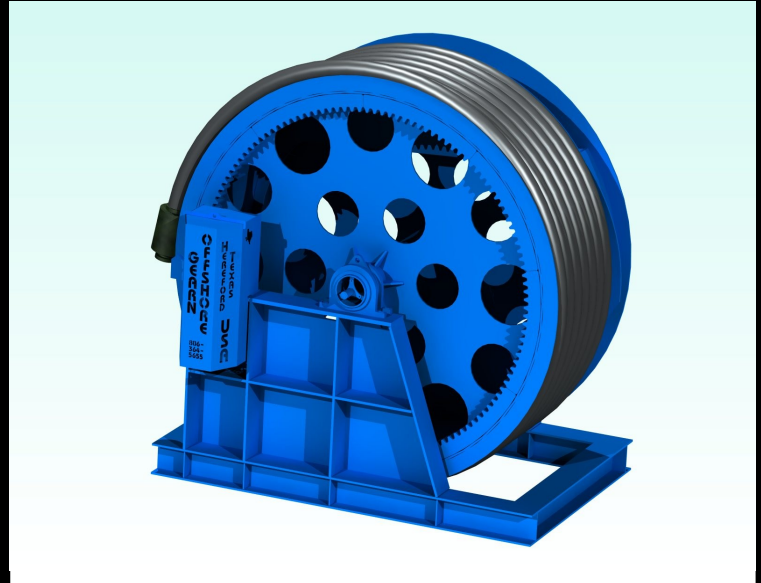
162" Long x 140" Wide at Base
162" Long x 168" Wide x 168" High Overall
65,000 lb With Flexible

Control Unit Size / Weight:

48" Long x 24" Wide x 52" High
500 lb With Hydraulic Fluid

High Pressure Components:

Nominal 4.00" Bore
Can Receive Up to 450' of 4" x 15 ksi Coflexip Pipe
4" x 15 ksi Texas Oil Tools Quick Disconnect
4" x 15 ksi FMC Treating Iron



Winch Structure:

- Compact Footprint
- Skid Mounted Wide Flange Base
- Long Wear Brass Main Bearings
- 3/4" Plate Throughout Drum Structure
- Large Sidewall Openings for Access Inside Drum
- Gear Mesh Readily Visible Inside Drum
- Heavy Tideguard Coating on Drum Surface

Drivetrain:

- 37 kW Electrical Motor with Variable Frequency Drive and Braking Resistors
- Heavy Duty Planetary Gear Reducer with Integrated Parking Brake
- Large Diameter Primary Gear

Hydraulic System:

- Stainless Steel Tubing
- Oversized Flexible Hoses
- Medium System Pressure (1500 psi)
- Non-Circulating Hydraulic Flow
- Accumulator for Reserve Pressure
- Emergency Functions are Hydraulically Operated

Power Requirements:

- 460 VAC 3-Phase, 50 kW Nominal
- 120 VAC Single Phase, 200 W Nominal

Control Unit Structure:

- Hot Dipped Galvanized Framework
- Hot Dipped Galvanized Access Panels
- Clear Coat Paint Inside and Out
- Heavy Vinyl Cover When Not in Use

Electrical System:

- All Components Rated NEMA 4X
- Components Rated Explosion Proof Upon Request
- All Exposed Components Rated IP56
- Enclosed 3.7 kW Hydraulic Motor Rated IP54
- Touch Screen PLC Control and Troubleshooting

Emergency and Braking Systems:

- Hydraulic Disconnect, Hydraulic and Spring Applied Connect
- Local Manual and Remote Electrical Quick Disconnect Operation
- Quick Acting Hand Pump
- Spring Applied, Hydraulically Released Parking Brake